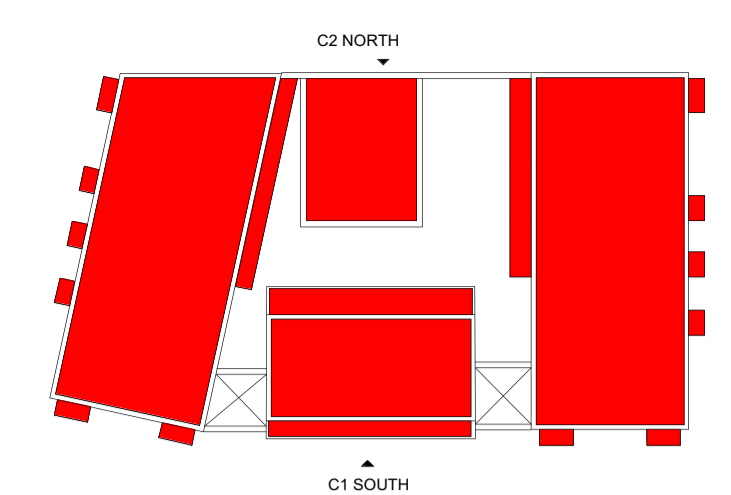




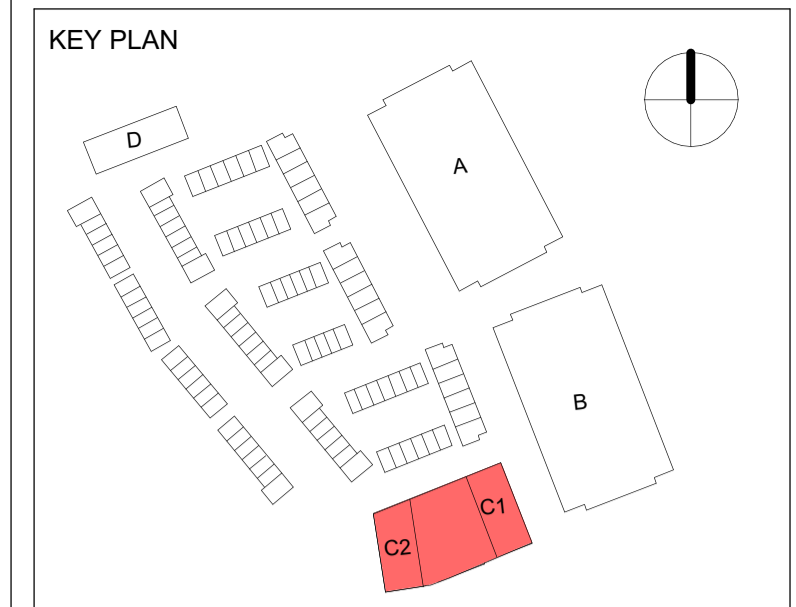
North Elevation
1 : 200



South Elevation
1 : 200



- MATERIAL KEY**
1. Render B14 (Blue)
 2. Render R10 (Salmon)
 3. Render S35 (Yellow)
 4. Render T60 (Mustard)
 5. Red Brick with white mortar
 6. White Brick with white mortar
 7. Concrete cill
 8. PPC Aluminium cill
 9. PPC Aluminium window/door to approved colour
 10. PCC metal louvre/door system to approved color
 11. PCC metal balustrade/gates/railings
 12. Concrete string course
 13. PCC Metal Gate
 14. Concrete Coping
 15. Recess metal for signage
 16. Sillier coping brickwork
 17. Concrete Surround



- Key**
- Retail
 - Childcare Facilities
 - Back of House
 - Outdoor Play Area
 - Access to the building
 - 1.1 Vehicle Entrance
- Car park vehicle entrance relocated to north elevation
- Car parking bays reconfigured:
- Car spaces (23 before, 23 proposed)
 - Motorbike spaces (2 before, 2 proposed)
 - Cycle spaces (long term) (126 before, 126 proposed)
 - Cycle spaces (short term) (20 before, 20 proposed)
- Accessible Space Relocated close to C1 Entrance
- Facade openings reconfigured to suit parking
- 1.2 Roadside parking relocated
- 2 no parking spaces relocated, 2no additional spaces due to reconfiguration.
- 1.3 Retail Frontages
- Ground floor frontages have been reconfigured to reflect the new parking entrances and parking bay locations. (including additional piers)
- All ground floor fenestrations to be PPC aluminium RAL 7044 Silk Grey
- 1.4 Building Levels
- Internal floor levels have been rationalised across the building approved scheme proposed scheme
- | | Previous Level | Proposed Level |
|-------------------------|----------------|----------------|
| Crèche level | +7300mm | +7200mm |
| Car park level | +6200mm | +7000mm |
| Convenience store level | +5200mm | +5200mm |
- 1.5 Plant areas, Bin stores and Cycle Stores
- Bin stores and cycle stores have been located towards the centre of the plan, accessed from the car park.
 - Ventilation has been provided from the facade facing the outdoor play area.
 - Plant areas have also been relocated towards the centre of the plan.
 - The substation remains in its current position on the north elevation.
- 1.6 Ground Floor Areas
- Approved Scheme Areas (ground floor block C):**
- Convenience Store = 249 sqm
 - Cafe = 195 sqm
 - Childcare facilities = 627 sqm
- Proposed Scheme Areas (ground floor block C):**
- Convenience Store = 420 sqm
 - Cafe = 228 sqm
 - Childcare facilities = 672 sqm

Rev	Description	Date
P01	Block C Retention Submission	15.07.25

ballymore.

Howells

PROJECT

Bray Phase 1

DRAWING NUMBER

BRA-GHA-C-ZZ-DR-A-01400

DRAWING TITLE

To Be Retained Block C - General Arrangement Elevations - Sheet 1

DRAWN BY	CHECKED BY	DATE
NS	RB	JULY.25
REV	SCALE @ A1	STATUS
P01	1 : 200	S3

30/07/2025 12:46:25