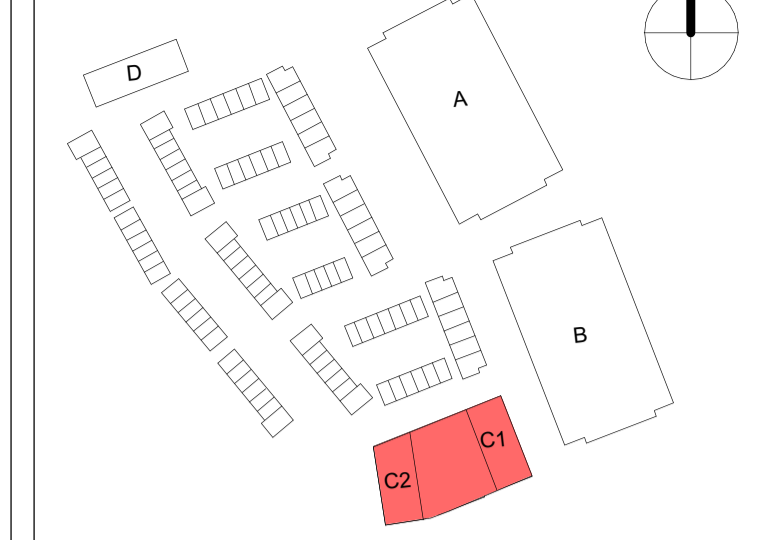


Market Square picked up as part of the compliance submission for Condition 26(c) of ABP-311181-21 (PRR SH2021/03)

KEY PLAN



- Key**
- Retail
 - Childcare Facilities
 - Back of House
 - Outdoor Play Area
 - Area highlighting changes as described below.
 - Site boundary
 - Access to the building
 - 1.1 Vehicle Entrance

- Car park vehicle entrance relocated to north elevation
- Car parking bays reconfigured:
 - Car spaces (23 before, 23 proposed)
 - Motorbike spaces (2 before, 2 proposed)
 - Cycle spaces (long term) (126 before, 126 proposed)
 - Cycle spaces (short term) (20 before, 20 proposed)
- Accessible Space Relocated close to C1 Entrance
- Facade openings reconfigured to suit parking
- 1.2 Roadside parking relocated
- 2 no parking spaces relocated, 2no additional spaces due to reconfiguration.
- 1.3 Retail Frontages
- Ground floor frontages have been reconfigured to reflect the new parking entrances and parking bay locations (including additional piers)
- All ground floor fenestrations to be PPC aluminium RAL 7044 Silk Grey
- 1.4 Building Levels
- Internal floor levels have been rationalised across the building approved scheme proposed scheme

	Previous Level	Proposed Level
Crèche level	+7300mm	+7200mm
Car park level	+6200mm	+7000mm
Convenience store level	+5200mm	+5200mm

- 1.5 Plant areas, Bin stores and Cycle Stores

 - Bin stores and cycle stores have been located towards the centre of the plan, accessed from the car park.
 - Ventilation has been provided from the facade facing the outdoor play area.
 - Plant areas have also been relocated towards the centre of the plan.
 - The substation remains in its current position on the north elevation.

- 1.6 Ground Floor Areas
- Approved Scheme Areas (ground floor block C):

 - Convenience Store = 249 sqm
 - Cafe = 195 sqm
 - Childcare facilities = 627 sqm

- Proposed Scheme Areas (ground floor block C):

 - Convenience Store = 420 sqm
 - Cafe = 228 sqm
 - Childcare facilities = 672 sqm

Rev	Description	Date
P01	Block C Retention Submission	15.07.25

ballymore.

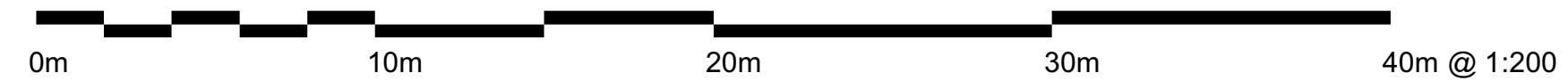
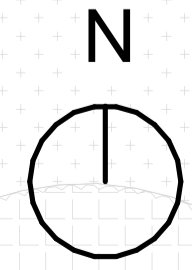
Howells

PROJECT
Bray Phase 1

DRAWING NUMBER
BRA-GHA-C-ZZ-DR-A-01101

DRAWING TITLE
To Be Retained - Block C Ground Floor Plan

DRAWN BY	CHECKED BY	DATE
NS	RB	JULY.25
REV	SCALE @ A1	STATUS
P01	1 : 200	S3



30/07/2025 12:45:07